

A Simple Multimembered Evolution Strategy to Solve Constrained Optimization Problems

Efrén Mezura-Montes and Carlos A. Coello Coello

Evolutionary Computation Group (EVOCINV)

CINVESTAV-IPN

Computer Science Section

Electrical Engineering Department

México, D.F., 07300, MEXICO

`emezura@computacion.cs.cinvestav.mx`

`ccoello@cs.cinvestav.mx`

Abstract

This paper presents a simple multimembered evolution strategy (SMES) to solve global nonlinear optimization problems. The approach does not require the use of a penalty function. Instead, it uses a simple diversity mechanism based on allowing infeasible solutions to remain in the population. This technique helps the algorithm to find the global optimum despite reaching reasonably fast the feasible region of the search space. A simple feasibility-based comparison mechanism is used to guide the process towards the feasible region of the search space. Also, the initial stepsize of the evolution strategy is reduced in order to perform a finer search and a combined (discrete/intermediate) panmictic recombination technique improves its exploitation capabilities. The approach was tested with a well-known benchmark. The results obtained are very competitive when comparing the proposed approach against other state-of-the art techniques and its computational cost (measured by the number of fitness function evaluations) is lower than the cost required by the other techniques compared.

1 Introduction

Evolutionary algorithms (EAs) have been widely used to solve several types of optimization problems [11, 1, 8, 10]. Nevertheless, they are unconstrained search techniques and lack an explicit mechanism to bias the search in constrained search spaces. This has motivated the development of a considerable number of approaches to incorporate constraints into the fitness function of an EA [25, 6].

The most common approach adopted to deal with constrained search spaces is the use of penalty functions [28]. When using a penalty function, the amount of constraint violation is used to punish or “penalize” an infeasible solution so that feasible solutions are favored by the selection process. Despite the popularity of penalty functions, they have several drawbacks from which the main one is that they require a careful fine tuning of the penalty factors that accurately estimates the degree of penalization to be applied so that we can approach efficiently the feasible region [32, 6].

Evolution Strategies (ES) have been found not only efficient in solving a wide variety of optimization problems [31, 12, 4, 2, 1], but also have a strong theoretical background [30, 3, 5].

Our approach uses the self-adaptive mutation mechanism of a multimembered evolution strategy to explore constrained search spaces. This is combined with a comparison mechanism which uses three feasibility-based rules to guide the search towards the global optima of constrained optimization problems. To avoid a high selection pressure and maintain infeasible solutions in the population, a simple diversity mechanism is added. The idea is to allow the individual with the lowest amount of constraint violation and the best value of the objective function to be selected for the next population. This solution can be chosen with 50% probability either from the parents or the offspring population. A hybrid panmictic recombination operator that combines discrete and intermediate recombination is used to improve the exploitation mechanism of our algorithm.

With these combined elements, the algorithm first focuses on reaching the feasible region of the search space. After that, it is capable of moving over the feasible region as to reach the global optimum. The infeasible solutions that remain in the population

are used to sample points in the boundaries between the feasible and the infeasible regions. Thus, the main focus of this paper is to show how a multimembered evolution strategy coupled with very simple mechanisms is able to produce results that are highly competitive with respect to other constraint-handling approaches that are representative of the state-of-the-art in evolutionary optimization.

This paper is organized as follows: In Section 2 we define the global nonlinear optimization problem that we aim to solve. After that, in Section 3 a description of previous approaches based on similar ideas is provided. Section 4 presents a detailed description of our approach. Then, in Section 5, we present the experimental design and show the obtained results which are discussed in Section 6. Section 7 provides an experimental study that aims to identify the mechanism that is mainly responsible for the effectiveness of our proposed approach. The rate at which our approach reaches the feasible region (in the test functions adopted) is analyzed in Section 8. In Section 9 some conclusions are established. Finally, some possible paths for future research are provided in Section 10.

2 Statement of the Problem

We are interested in the general nonlinear programming problem in which we want to:

$$\text{Find } \vec{x} \text{ which optimizes } f(\vec{x}) \tag{1}$$

subject to:

$$g_i(\vec{x}) \leq 0, \quad i = 1, \dots, n \tag{2}$$

$$h_j(\vec{x}) = 0, \quad j = 1, \dots, p \tag{3}$$

where \vec{x} is the vector of solutions $\vec{x} = [x_1, x_2, \dots, x_r]^T$, n is the number of inequality constraints and p is the number of equality constraints (in both cases, constraints could be linear or nonlinear).

If we denote with \mathcal{F} to the feasible region and with \mathcal{S} to the whole search space, then it should be clear that $\mathcal{F} \subseteq \mathcal{S}$.

For an inequality constraint that satisfies $g_i(\vec{x}) = 0$, then we will say that is active at \vec{x} . All equality constraints h_j (regardless of the value of \vec{x} used) are considered active at all points of \mathcal{F} .

3 Previous Work

The inspiration of our approach was motivated by the idea of exploring the capabilities of multiobjective optimization concepts to solve global optimization problems. We compared four representative approaches using the same test functions adopted in this paper [21, 18]. One of the conclusions of this work was the importance of a mechanism to maintain diversity in the population (i.e., to allow feasible and infeasible solutions to remain in the population during all the evolutionary process) [23].

Motivated by the fact that the most recent and competitive approaches to solve constrained optimization problems are based on an Evolution Strategy (e.g. Stochastic Ranking [29] and ASCHEA [13]) we hypothesized the following:

1. The self-adaptation mechanism of an ES helps to sample the search space well enough as to reach the feasible region reasonably fast.
2. The simple addition of feasibility rules to an ES should be enough to guide the search in such a way that the global optimum can be approached efficiently.

Thus, based on these ideas, we implemented a generic ES-based approach to solve constrained optimization problems. Then, we performed an empirical study in which we varied the type of selection (“+” or “;”) and the type of mutation (noncorrelated or correlated) [19]. We also implemented a variation of a $(\mu + 1)$ -ES with the “1/5 successful rule” to adapt on-line the sigma value [19]. Constraints were handled using rules based on feasibility (see Section 4 for details).

The use of rules based on feasibility has been explored in the past by other authors. Jiménez and Verdegay [15] proposed an approach similar to a min-max formulation used in multiobjective optimization combined with tournament selection. The rules used by them are similar to those adopted in this work. However, Jiménez and Verde-

gay’s approach lacks an explicit mechanism to avoid the premature convergence produced by the random sampling of the feasible region because their approach is guided by the first feasible solution found.

Powell and Skolnick [26] proposed to map feasible solutions into the interval $(-\infty, 1)$, and infeasible solutions into the interval $(1, \infty)$. The aim is to consider feasible solutions always superior to infeasible ones.

Individuals are evaluated using [26]:

$$\text{fit}(\vec{x}) = \begin{cases} f(\vec{x}) & \text{if feasible} \\ 1 + r \left(\sum_{i=1}^n g_i(\vec{x}) + \sum_{j=1}^p h_j(\vec{x}) \right) & \text{otherwise} \end{cases} \quad (4)$$

$f(\vec{x})$ is scaled into the interval $(-\infty, 1)$, $g_i(\vec{x})$ and $h_j(\vec{x})$ are scaled into the interval $(1, \infty)$, and r is a constant. Powell and Skolnick [26] used linear ranking selection in order to get a slower convergence.

Deb [9] proposed the selection criteria adopted in our work as tournament rules to select individuals using a GA. In his approach, the following expression is used to assign fitness to a solution:

$$\text{fit}_i(\vec{x}) = \begin{cases} f_i(\vec{x}) & \text{if feasible} \\ f_{worst} + \sum_{j=1}^n g_j(\vec{x}) & \text{otherwise} \end{cases} \quad (5)$$

where f_{worst} is the objective function value of the worst feasible solution. However, Deb proposed to use niching as a diversity mechanism, which introduces some extra computational time (niches are an $O(N^2)$ procedure). As in Powell and Skolnick’s algorithm [26], in Deb’s approach, feasible solutions are always considered better than infeasible ones. This contradicts the idea of allowing infeasible individuals to remain in the population. Therefore, this approach will have difficulties in problems in which the global optimum lies on the boundary between the feasible and the infeasible regions.

Coello & Mezura [7] used tournament selection based on feasibility rules (this is one of four different multiobjective-based techniques compared). They also adopted nondominance checking using a sample of the population (as the multiobjective optimization approach called NPGA [14]). In this approach, a user-defined parameter S_r is used to control the diversity in the population. This approach provided good re-

sults in some well-known engineering problems and in some benchmark problems, but presented problems when facing high dimensionality [7].

From our ES's comparative study, the best results were provided by the variation of a $(\mu + 1)$ -ES [19] in which one child created from μ mutations of the current solution competes against it and the better one is selected as the new current solution. The details of this approach are shown in Figure 1.

However, the approach presented premature convergence in some test functions [19]. A $(1 + \lambda)$ -ES was proposed in [20], which improved the robustness and quality of the previous ES proposed by the same authors. In this case, a self-adaptive parameter called Selection Ratio (S_r) (similar to that proposed by Coello & Mezura [7] and mentioned above) is adopted. S_r refers to the percentage of selections that will be performed in a deterministic way (as used in the original version of our ES where the child replaces the current solution using the feasibility-based comparison mechanism). In the remaining $1 - S_r$ selections, there are two choices: (1) either the parent (out of the λ) with the best value of the objective function will replace the current solution (regardless of its feasibility) or (2) the best parent (using again the feasibility-based comparison mechanism) will replace the current solution. Both options are given 50% probability each.

The $(1 + \lambda)$ -ES approach proposed in [20] made evident that having a good mechanism to maintain diversity is one of the keys to produce a constraint-handling approach that is competitive with the techniques representative of the state-of-the-art in the area.

However, these two approaches, based on a non-population ES lack the explorative power to allow them sample large search spaces. Thus, we decided to re-evaluate the use of a $(\mu + \lambda)$ -ES to solve this limitation, but in this case, adding the diversity mechanism implemented in our previous approaches.

4 Our approach

Our new approach is based on the same concepts that its predecessors discussed in Section 3: (1) the self-adaptation mechanism of an ES and (2) a comparison mechanism based on the following criteria:

1. Between 2 feasible solutions, the one with the highest fitness value wins.
2. If one solution is feasible and the other one is infeasible, the feasible solution wins.
3. If both solutions are infeasible, the one with the lowest sum of constraint violation is preferred.

Also, it has a simple diversity mechanism similar to that used in the $(1 + \lambda)$ -ES and a combination of discrete and intermediate panmictic recombination.

The detailed features of our algorithm are the following:

- **Diversity Mechanism:** With an idea similar to that used in the $(1 + \lambda)$ -ES version, we allow infeasible solutions to remain in the population. However, unlike this previous approach, where the best parent based only on the objective function (regardless of its feasibility) can survive, in this new approach we allow the infeasible individual with the best value of the objective function and with the lowest amount of constraint violation to survive for the next generation. This solution (called by us the best infeasible solution) can be chosen either from the parents or the offspring population, with 50% probability. This process of allowing this solution to survive for the next generation happens 3 times every 100 during the same generation. However, it is a desired behavior because a few copies of this solution will allow its recombination with several solutions in the population, specially with feasible ones. Recombining feasible solutions with infeasible solutions in promising areas (based on the good value of the objective function) and close to the boundary of the feasible region will allow the ES to reach global optimum solutions located precisely on the boundary of the feasible region of the search space (which are known as the most difficult solutions to be reached). Following the idea of allowing just a few infeasible solutions (one in case of the $(1 + \lambda)$ -ES approach), we allow the best infeasible solution to be copied into the population for the next generation just 3 times for every 100 attempts. This works in the following way: When the deterministic replacement is used to form the population for the next generation in an ES, the best indi-

viduals from among the parents and offspring are selected using the comparison mechanism previously indicated (in a deterministic way). The process will pick feasible solutions with a better value of the objective function first, followed by infeasible solutions with a lower value of constraint violation. However, 3 times from every 100 picks, the best infeasible solution (from either the parents or the offspring population with 50% probability each) is copied in the population for the next generation. The pseudocode is listed in Figure 2.

Based on the empirical evidence observed in the previous version of the approach [20] where we used a population of 3 offspring, we decided to use a small number of copies of the best infeasible solutions for the next generation of our approach. For values larger than 3 the quality and robustness of our approach tend to decrease.

- **Combined recombination:** We use panmictic recombination, but with a combination of the discrete and intermediate recombination operators. Each gene in the chromosome can be processed with any of these two recombination operators with 50% probability. This operator is applied to both, strategy parameters (sigma values) and decision variables of the problem. The pseudocode is shown in Figure 3. Note that we use intermediate recombination by just computing the average between the values of the variable of each parent (as originally proposed by Schwefel [30]).
- **Reduction of the initial stepsize of the ES:** The previous versions of our algorithm are based on a variation of a $(\mu + 1)$ -ES [19] and a $(1 + \lambda)$ -ES [20]. Thus, they do not use a population of solutions but employ the most simple scheme of an ES where only one sigma value is used for all the decision variables. We observed that when this sigma value was close to zero, the previous approaches were capable of reaching the global optimum, or at least improve the value of the final solution. Therefore, in our new approach based on a multimembered ES, we decided to favor finer movements in the search space. We experimented with just a percentage of the quantity obtained by the formula proposed by Schwefel [30]. We initialize the sigma values (we use one for each decision variable) for

each individual in the initial population with only a 40% of the value obtained by the following formula (where n is the number of decision variables):

$$\sigma_i(0) = 0.4 \times \left(\frac{\Delta x_i}{\sqrt{n}} \right) \quad (6)$$

where Δx_i is approximated with the expression (suggested in [29]), $\Delta x_i \approx x_i^u - x_i^l$, where $x_i^u - x_i^l$ are the upper and lower bounds of the decision variable i .

Summarizing, our approach works over a simple multimembered evolution strategy: $(\mu + \lambda)$ -ES. The only modifications introduced are the reduction of the initial stepsize of the sigma values, the panmictic combined (discrete-intermediate) recombination and the changes to the original deterministic replacement of the ES (made by sorting the solutions using the comparison mechanism based on feasibility discussed at the beginning of this section), allowing the best infeasible solution, from either the parents or the offspring population, to remain in the next generation. The details of our approach are presented in Figure 4.

Unlike Deb’s [9] technique, our approach does not use niches in order to maintain diversity in the population. This is because inside the replacement process used to produce the population for the next generation, we incorporate a mechanism that allows slightly infeasible solutions with a good objective function value to be considered better than feasible ones. This ES-like replacement makes also a difference with respect to Powell and Skolnick’s approach [26], which uses proportional selection (with linear ranking) on a GA-based approach.

5 Experiments and Results

To evaluate the performance of the proposed approach we used the 13 test functions described in [29]. The test functions chosen contain characteristics that are representative of what can be considered “difficult” global optimization problems for an evolutionary algorithm. Their expressions are provided in an Appendix, at the end of the paper.

To get an estimate of how difficult is to generate feasible points through a purely random process, we computed the ρ metric (as suggested by Michalewicz and Schoenauer [25]) using the following expression:

$$\rho = |F|/|S| \quad (7)$$

where $|S|$ is the number of random solutions generated ($S = 1,000,000$ in our case), and $|F|$ is the number of feasible solutions found (out of the total $|S|$ solutions randomly generated).

The values of ρ for each of the functions chosen are shown in Table 1, where n is the number of decision variables, LI is the number of linear inequalities, NI the number of nonlinear inequalities, LE is the number of linear equalities and NE is the number of nonlinear equalities.

We performed 30 independent runs for each test function. The learning rates values were calculated using the formulas proposed by Schwefel [30] (where n is the number of decision variables of the problem):

$$\tau = \left(\sqrt{2\sqrt{n}}\right)^{-1} \quad \tau' = \left(\sqrt{2n}\right)^{-1} \quad (8)$$

The initial values for the standard deviations were calculated using equation (6).

For the experiments we used the following parameters:

- $\mu = 100$.
- $\lambda = 300$.
- Number of generations = 800.
- Number of objective function evaluations = 240,000.

The combined recombination operator explained in detail in Section 4 was used both for the decision variables of the problem and for the strategy parameters (sigma values). Note that we do not use correlated mutation [22].

To deal with equality constraints, a dynamic mechanism originally proposed in ASCHEA [13] and used in [20] is adopted. The tolerance value ϵ is decreased with respect to the current generation using the following expression:

$$\epsilon_j(t + 1) = \epsilon_j(t)/1.00195 \quad (9)$$

The initial ϵ_0 was set to 0.001. Note that the use of the value 1.00195 in equation (9) causes the allowable tolerance for the equality constraints to go from 0.001 (initial value) to 0.0004 (final value) given the number of iterations adopted by our approach (if more iterations are performed, this value will tend to zero).

For problem *g13*, ϵ_0 was set to a much larger value (3.0), because in this case it is very difficult to generate feasible solutions during the initial generations of our approach. Thus, by using a large tolerance value, more individuals will be able to satisfy the equality constraints and will serve as reference solutions that the algorithm will improve over time. Given that this larger value is adopted, we also changed the constant decreasing value. So, instead of using 1.00195, we adopt, in this case, a value of 1.0145. Such a value causes the allowable equality constraint violation to go from 3.0 (initial value) to 0.00003 (final value) given the number of iterations adopted by our approach. Note that the final allowable tolerance is smaller in this case, despite the initial larger value. As a matter of fact, we recommend to use this second setup for the tolerance of the equality constraints in problems in which no feasible solutions can be found by our algorithm when using a small initial ϵ_0 .

Additionally, for problems *g03* and *g13* the initial stepsize required a more dramatic decrease. They were defined as 0.01 (just a 5% instead of the 40% used for the other test functions) for *g03* and 0.05 (2.5%) for *g13*. These two test functions seem to provide better results with very smooth movements. It is important to note that these two problems share the following features: moderately high dimensionality (five or more decision variables), nonlinear objective function, one or more equality constraints, and moderate size of the search space (based on the range of the decision variables). These common features suggest that for these types of problems, finer movements provide a better sampling of the search space using an evolution strategy.

The statistical results of our SMES are summarized in Table 2.

We compare our approach against three state-of-the-art approaches: the Homomorphous Maps (HM) [17], Stochastic Ranking (SR) [29] and the Adaptive Segregational

Constraint Handling Evolutionary Algorithm (ASCHEA) [13]. The best results obtained by each approach are shown in Table 3. The mean values provided are compared in Table 4 and the worst results are presented in Table 5. The results provided by these approaches were taken from the original references for each method.

HM performs a homomorphous mapping between an n -dimensional cube and a feasible search space (either convex or non-convex). The main idea of this approach is to transform the original problem into another (topologically equivalent) function that is easier to optimize by an EA. HM handles two cases: convex feasible space and nonconvex feasible space. HM uses a binary-coded GA with Gray codes, proportional selection without elitism and traditional crossover and mutation operators.

The aim of SR is to balance the influence of the objective function and the penalty function when assigning fitness to a solution. SR does not require the definition of a penalty factor. The selection process is based on a ranking process. Instead, a user-defined parameter called P_f sets the probability of using only the objective function to compare two solutions to sort them. Then, when the solutions are sorted using a bubble-sort like algorithm, sometimes, depending of the P_f value, the comparison between two adjacent solutions will be performed using only the objective function. The remaining comparisons will be performed using only the penalty function that consists, in this case, of the sum of constraint violation. SR uses a (30, 200)-ES with global intermediate recombination applied only to the strategy parameters (not to the decision variables of the problem).

ASCHEA is based on three components: (1) an adaptive penalty function, (2) a constraint-driven recombination, and (3) a segregational selection based on feasibility. In ASCHEA's most recent version [13], the authors propose to use a penalty factor for each constraint of the problem. Also, the authors added a niching mechanism to improve the performance of the algorithm in multimodal functions. Finally, the authors added a dynamic and an adaptive scheme to decrease the tolerance value used in the transformation of equality constraints into two inequality constraints. The approach uses a (100 + 300)-ES with standard arithmetical recombination.

6 Discussion of Results

As described in Table 2, our approach was able to find the global optimum in seven test functions (g01, g03, g04, g06, g08, g11 and g12) and it found solutions very close to the global optimum in the remaining six (g02, g05, g07, g09, g10, g13). In Table 6 we show the number of runs in which the global optimum (or best known solution) was reached. In addition, we show the lowest and the average generation number in which such global optimum was found. The results obtained suggest that for the problems in which the global optimum was reached, the algorithm is capable of finding it using no more than 250 generations (about 75,000 evaluations of the objective function), except for function g01 where the number of generations is 671.

When compared with respect to the three state-of-the-art techniques previously indicated, we found the following (see Tables 3, 4 and 5):

6.1 Compared with the Homomorphous Maps (HM)

Our approach found a better “best” solution in ten problems (g01, g02, g03, g04, g05, g06, g07, g09, g10 and g12) and a similar “best” result in other two (g08 and g11). Also, our technique reached better “mean” and “worst” results in ten problems (g01, g03, g04, g05, g06, g07, g08, g09, g10 and g12). A “similar” mean and worst result was found in problem g11. The Homomorphous maps found a “better” mean and worst result in function g02. No comparisons were made with function g13 because such results were not available for HM.

6.2 Compared with Stochastic Ranking (SR)

With respect to SR, our approach was able to find a better “best” result in functions g02 and g10. In addition, it found a “similar” best solution in seven problems (g01, g03, g04, g06, g08, g11 and g12). Slightly better “best” results were found by SR in the remaining functions (g05, g07, g09 and g13). Our approach found better “mean” and “worst” results in four test functions (g02, g06, g09 and g10). It also provided similar “mean” and “worst” results in six functions (g01, g03, g04, g08, g11 and g12). Finally,

SR found again better “mean” and “worst” results in function g05, g07 and g13.

6.3 Compared with the Adaptive Segregational Constraint Handling Evolutionary Algorithm (ASCHEA)

Compared against ASCHEA, our algorithm found “better” best solutions in three problems (g02, g07 and g10) and it found “similar” best results in six functions (g01, g03, g04, g06, g08, g11). ASCHEA found slightly “better” best results in function g05 and g09. Additionally, our approach found “better” mean results in four problems (g01, g02, g03 and g07) and it found “similar” mean results in three functions (g04, g08 and g11). ASCHEA surpassed our mean results in four functions (g05, g06, g09 and g10). We did not compare the worst results because they were not available for ASCHEA. Also, we did not perform comparisons with respect to ASCHEA using functions g12 and g13 for the same reason.

As we can see, our approach showed a very competitive performance with respect to these three state-of-the-art approaches.

6.4 Advantages of the Approach

Our approach can deal with moderately constrained problems (g04), highly constrained problems, problems with low (g06, g08), moderated (g09) and high (g01, g02, g03, g07) dimensionality, with different types of combined constraints (linear, nonlinear, equality and inequality) and with very large (g02), very small (g05 and g13) or even disjoint (g12) feasible regions. Also, the algorithm is able to deal with large search spaces (based on the intervals of the decision variables) with a very small feasible region (g10). Furthermore, the approach can find the global optimum in problems where such optimum lies on the boundaries of the feasible region (g01, g02, g04, g06, g07, g09). This behavior suggests that the mechanism of maintaining the best infeasible solution helps the search to sample the boundaries between the feasible and infeasible regions.

Regarding computational cost, we can say that the number of fitness function evaluations (FFE) performed by our approach is lower than the other techniques with respect

to which it was compared. Our approach performed 240,000 FFE. Stochastic ranking performed 350,000 FFE, the Homomorphous maps performed 1,400,000 FFE, and ASCHEA required 1,500,000 FFE.

7 Finding the Strength of the Approach

Once we corroborated the effectiveness of our approach, it became particularly relevant to identify the key component (or combination of them) that was mainly responsible for the good performance of our algorithm. For that sake, we designed two experiments.

The aim of the first experiment was to know which of the three modifications to the $(\mu + \lambda)$ -ES was mandatory, or if only the combined effect of all three made the algorithm work.

The goal of the second experiment was to reinforce our hypothesis regarding the effectiveness of the self-adaptation mechanism of an ES to sample constrained search spaces.

The experiments consisted on the following:

- **Cross-validation of our ES' mechanisms:** We tested our SMES using each of its mechanisms separately and combining them in pairs, in order to recognize which of them was mandatory. It is important to note that removing the diversity mechanism implies disallowing the best infeasible solution to remain in the population for the next generation of the algorithm. The comparison mechanism (the three rules based on feasibility) remains in all cases in order to guide the search to the feasible region of the search space.
- **ES against GA:** Our second experiment consisted on implementing a real-coded GA with the same combined recombination and the same diversity mechanism used in our SMES. Here, we wanted to see if the use of a GA instead of an ES would make any significant difference in terms of performance.

We will discuss next the results obtained in each of these two experiments.

7.1 Cross-validation of our ES' mechanisms

We tested six different versions of our SMES:

- Only combined recombination.
- Only diversity mechanism.
- Only stepsize reduction.
- Combined recombination & diversity mechanism.
- Combined recombination & stepsize reduction.
- Stepsize reduction & diversity mechanism.

The parameters used in these six versions are exactly the same used in the experiments described in Section 5. Thus, the number of evaluations of the objective function is also the same (240,000).

The best results obtained for the three first versions (with only one feature) are presented in Table 7. Mean results are shown in Table 8 and worst results are shown in Table 9. The best, mean and worst results obtained for the last three versions (combination of two features) are shown in Tables 10, 11 and 12.

From the results shown in Tables 7, 8 and 9, it is clear that the version with only the combined recombination provided the better “best” results as well as the best “mean” and “worst” results for most of the functions. The version with only the diversity mechanism obtained better “best”, “mean” and “worst” results only for function g03 and was unable to reach the feasible region in g13. The version with only the stepsize reduction obtained better “best” results for functions g05 and g10; and it also obtained a better “worst” result for function g06. However, this version was also unable to reach the feasible region in g13.

With respect to the comparison among versions which use two (out of three) combined mechanisms, the results indicate that the combination of the recombination with the stepsize reduction provided the best and more robust results (see Tables 10, 11 and 12). This version obtained better “best” results for problems g02, g03, g07, g09,

and g10. Also it found similar “best” results for problems g01, g03, g06, g08, g11 and g12. The combined recombination coupled with the stepsize reduction obtained better “mean” results for problems g02, g03, g05, g07, g09, g10, g11 and g13; and it obtained similar “mean” results for problems g01, g06, g08 and g12. Finally, this version provided better “worst” results for problems g02, g03, g05, g06, g07, g10, g11 and g13, and similar “worst” results for problems g01, g08 and g12.

Based on the results obtained, we decided to compare the results provided by the two most competitive versions of our SMES (the version with only the combined recombination and the version with the combined recombination coupled with the stepsize reduction). The comparison of results is shown in the last three columns from Tables 3, 4, and 5. The results indicated that the version with both the recombination and the stepsize reduction provided better “best” results in seven problems (g02, g03, g05, g07, g09, g10 and g13) and similar “best” results in other five (g01, g06, g08, g11 and g12). This version with two mechanisms reached better “mean” results in three problems (g03, g10 and g13), and similar “mean” results in six functions (g01, g06, g08, g09, g11 and g12). Finally, this version provided better “worst” results in six problems (g03, g05, g06, g10, g11 and g13), and it provided similar “worst” results in three more (g01, g08 and g12). All these results suggest that the stepsize reduction, which provides finer mutation movements in the search space, help the combined recombination to sample the feasible region as to find competitive results.

The main question that arose at this point was: what is the role of the diversity mechanism in the success of our approach? In order to answer this question, we compared the results of the version with combined recombination and stepsize reduction against the version with the three mechanisms. The results can be seen in columns 9 and 6, respectively from Tables 3, 4, and 5. The complete version provided better “best” results in six functions (g02, g04, g05, g07, g10 and g13), and similar “best” results in other six (g01, g03, g06, g08, g11 and g12). Moreover, the complete version provided better “mean” results for three problems (g04, g11 and g13), and similar “mean” results in other four (g01, g03, g08 and g12). Finally the complete version obtained better “worst” results in three problems (g03, g04 and g11), and it reached similar “worst” solutions for other three (g01, g08 and g12).

Thus, our approach provides results of a better quality when using the diversity mechanism. However, the price paid for this higher quality of results is a slight decrease in robustness. Also, the overall results (providing competitive results in all 13 test functions) are better when the diversity mechanism is incorporated into our SMES. It is also worth reminding that the goal of the diversity mechanism is to allow the search to generate solutions in the boundaries of the feasible region (which is something critical when dealing with constraints that are active in the global optimum). Hence, the use of such diversity mechanism seems a logical choice for dealing with active constraints.

To conclude, the combined recombination seems to be the dominant mechanism, which is assisted by the fine mutation movements provided by the reduction of the initial stepsize. Finally, the diversity mechanism helps to sample solutions located on the boundaries between the feasible and infeasible regions.

7.2 ES against GA

For the comparison of performance between a genetic algorithm and an evolution strategy, we used a real-coded GA with non-uniform mutation [24]. Such a GA used the same comparison mechanism (with the diversity mechanism) adopted by our SMES. It is important to note that we tested different mutation operators for real-coded GAs and non-uniform mutation provided the best results. Furthermore, we intended that the GA used the same features of the ES (except for the self-adaptive mutation which we hypothesized was the main strength of our ES-based approach). Finally, the same dynamic mechanism to handle the tolerance for equality constraints was employed.

The parameters used by our real-coded GA were the following:

- Population size: 200
- Maximum number of generations: 1200
- Crossover rate: 0.8
- Mutation rate: 0.6
- Number of objective function evaluations: 240,000 (the same performed by our SMES).

We performed 30 runs for each test problem. The results obtained by the GA are presented in Tables 3, 4 and 5 in column 7 and they are compared against those provided by the SMES in column 6. As can be seen, both the quality and robustness of the results provided by the GA are significantly poorer than those obtained with the evolution strategy in all the test functions adopted. The exceptions are g08, g11 and g12, in which the GA was able to find competitive results. These results highlight the strong influence (positive in this case) of using a more adequate search engine, in our case an ES over a GA. Therefore, the results seem to confirm our initial hypothesis about the usefulness of an ES to sample constrained search spaces in a more appropriate way.

8 Reaching the Feasible Region

After discussing the quality, robustness and competitiveness of our approach and after studying the effect of its three main mechanisms, we wanted to verify the rate (measured in terms of generations) at which the algorithm was able to reach the feasible region. This is an important issue, because in many real-world problems is normally desirable to find feasible (even if not optimal) solutions with the lowest possible number of fitness function evaluations. This fact is due to different reasons typically found in industry: time-expensive evaluations of the objective function, restricted time to provide results in highly constrained problems, etc. Note however that a too fast arrival to the feasible region is not always desirable, since it may bias the search and keep us from reaching the global optimum.

To study this issue, we monitored the percentage of feasible solutions in the population of our SMES at every 200 generations (let's keep in mind that the total number of generations was fixed to 800). The results are presented in Figure 5(a). As can be seen, for all the test problems our approach reaches the feasible region by generation 200. For problem g05, more than 20% of the population is feasible by generation 200 and for the remaining functions almost all the population is feasible by then. Based on the results found, we were interested in answering two questions:

1. What is the behavior before generation 200 (i.e., how fast does the population become almost feasible—where “almost feasible” refers to have a population in which at least 50% of the individuals are feasible—)?
2. How well is the diversity maintained at late stages of the evolutionary process?

The results obtained for these two questions are shown in Figure 5(b) and 5(d) for question 1 and in Figure 5(c) for question 2. Figure 5(b) shows that the feasible region is reached at generation 20 in most cases. This means that (except for g05 and g13) the approach only requires 6,100 FFE to find feasible solutions. In Table 13, we show the statistical results obtained at this stage of the search. Note that although the results are still far from the optimum, with the exception of problems g05 and g13, most of the solutions are feasible. In Figure 5(d) we observe in a close-up of Figure 5(b) that the algorithm has the capability of maintaining some infeasible solutions despite the almost-feasible population (which follows the main motivation for using the diversity mechanism adopted). In addition, we show the statistical results obtained at generation 200 in Table 14. A substantial improvement of the quality and robustness of the results is shown at generation 200 where only 20,000 FFE have been performed. Indeed, the results are close to the optimum in most of the problems (for problems g08 and g12 the algorithm has reached the global optimum). This means that the approach is about to converge in most cases. This highlights the importance of the diversity mechanism in order to avoid that the algorithm gets trapped in local optima and it can reach a better solution (even the global optimum).

On the other hand, Figure 5(c) shows a zooming of Figure 5(a), where it is possible to see again in detail the smooth oscillation on the percentage of feasible solutions during the evolutionary process after generation 200. This behavior suggests that the diversity mechanism still works well, maintaining near-feasible solutions with a good value of the objective function in the population (between 1 and 3 infeasible solutions are enough based on the previous results of the $(1 + \lambda)$ -ES approach [20], which is able to avoid local optima with only a few copies of the best infeasible solution).

The final results (on generation 800) provided in Table 2, compared with those on generation 200 (Table 14), suggest that our diversity mechanism does its job of

avoiding premature convergence and, when coupled with the combination of discrete and intermediate recombination and the self-adaptation mechanism of the ES leads the evolutionary search towards the global optimum of a problem.

It is important to remark that the process of finding the global optimum takes almost 3/4 of the evolutionary search and only 1/4 (or less) is necessary to find the feasible region of the search space. We argue that this behavior depends mostly of the landscape of the function, but such idea is not explored any further in this work.

The point we want to make here is that our approach is fast at reaching the feasible region while managing to avoid local attractors as to converge to the global optimum or its close vicinity.

9 Conclusions

A new approach to handle constraints in evolutionary optimization was proposed in this paper. The proposed approach does not require the use of a penalty function, it uses the original self-adaptation mechanism of a multimembered ES to sample the search space in order to reach the feasible region and it adopts a simple comparison mechanism based on feasibility to guide the search towards the global optimum. Furthermore, the proposed technique adopts a combination of discrete and intermediate panmictic recombination in order to improve the exploitation effort. Additionally, to favor finer movements in the search space, the initial values of the stepsize (sigma values) are decreased in 60% with respect to the values normally adopted with a multimembered ES. Finally, the approach uses a diversity mechanism which consists of allowing infeasible solutions close to the boundaries of the feasible region to remain in the next population.

This approach is very easy to implement and its computational cost (based on the number of fitness function evaluations) is considerably lower than the cost reported by three other constraint-handling techniques which are representative of the state-of-the-art in evolutionary optimization.

10 Future Work

One issue that deserves some further study is the sensitivity of our approach to the initial stepsize, since it is important to have a better understanding of the influence of this parameter on the performance of our algorithm. Besides, due to the relevance shown by the combined recombination operator, we are interested in testing other types of recombination operators like generalized panmictic intermediate recombination.

Another path of future research consists of applying our approach to the solution of real-world (engineering) optimization problems. Additionally we are also interested in implementing our constraint handling mechanism using other heuristics such as Differential Evolution [27] and Particle Swarm Optimization [16]. This aims to explore the possibility of decreasing its computational cost (measured in terms of the number of fitness function evaluations), after reaching the feasible region, since in the current approach almost 75% of the search process is spent on this task.

Acknowledgements — The authors gratefully acknowledge the valuable comments from Dr. Marc Schoenauer and the anonymous reviewers which greatly helped them to improve the contents of this paper. The first author acknowledges support from the Mexican Consejo Nacional de Ciencia y Tecnología (CONACyT) through a scholarship to pursue graduate studies at CINVESTAV-IPN's Electrical Engineering Department. The second author acknowledges support from CONACyT through project number 42435-Y.

Appendix: Test Functions

1. **g01**:

Minimize: $f(\vec{x}) = 5 \sum_{i=1}^4 x_i - 5 \sum_{i=1}^4 x_i^2 - \sum_{i=5}^{13} x_i$ subject to:

$$g_1(\vec{x}) = 2x_1 + 2x_2 + x_{10} + x_{11} - 10 \leq 0$$

$$g_2(\vec{x}) = 2x_1 + 2x_3 + x_{10} + x_{12} - 10 \leq 0$$

$$g_3(\vec{x}) = 2x_2 + 2x_3 + x_{11} + x_{12} - 10 \leq 0$$

$$g_4(\vec{x}) = -8x_1 + x_{10} \leq 0$$

$$g_5(\vec{x}) = -8x_2 + x_{11} \leq 0$$

$$g_6(\vec{x}) = -8x_3 + x_{12} \leq 0$$

$$g_7(\vec{x}) = -2x_4 - x_5 + x_{10} \leq 0$$

$$g_8(\vec{x}) = -2x_6 - x_7 + x_{11} \leq 0$$

$$g_9(\vec{x}) = -2x_8 - x_9 + x_{12} \leq 0$$

where the bounds are $0 \leq x_i \leq 1$ ($i = 1, \dots, 9$), $0 \leq x_i \leq 100$ ($i = 10, 11, 12$) and $0 \leq x_{13} \leq 1$. The global optimum is at $x^* = (1, 1, 1, 1, 1, 1, 1, 1, 3, 3, 3, 1)$ where $f(x^*) = -15$. Constraints g_1, g_2, g_3, g_4, g_5 and g_6 are active.

2. **g02:**

Maximize: $f(\vec{x}) = \left| \frac{\sum_{i=1}^n \cos^4(x_i) - 2 \prod_{i=1}^n \cos^2(x_i)}{\sqrt{\sum_{i=1}^n i x_i^2}} \right|$ subject to:

$$g_1(\vec{x}) = 0.75 - \prod_{i=1}^n x_i \leq 0$$

$$g_2(\vec{x}) = \sum_{i=1}^n x_i - 7.5n \leq 0 \quad (10)$$

where $n = 20$ and $0 \leq x_i \leq 10$ ($i = 1, \dots, n$). The global maximum is unknown; the best reported solution is [29] $f(x^*) = 0.803619$. Constraint g_1 is close to being active ($g_1 = -10^{-8}$).

3. **g03:**

Maximize: $f(\vec{x}) = (\sqrt{n})^n \prod_{i=1}^n x_i$

subject to:

$$h(\vec{x}) = \sum_{i=1}^n x_i^2 - 1 = 0$$

where $n = 10$ and $0 \leq x_i \leq 1$ ($i = 1, \dots, n$). The global maximum is at $x_i^* = 1/\sqrt{n}$ ($i = 1, \dots, n$) where $f(x^*) = 1$.

4. **g04:**

$$\text{Minimize: } f(\vec{x}) = 5.3578547x_3^2 + 0.8356891x_1x_5 + 37.293239x_1 - 40792.141$$

subject to:

$$g_1(\vec{x}) = 85.334407 + 0.0056858x_2x_5 + 0.0006262x_1x_4 - 0.0022053x_3x_5 - 92 \leq 0$$

$$g_2(\vec{x}) = -85.334407 - 0.0056858x_2x_5 - 0.0006262x_1x_4 + 0.0022053x_3x_5 \leq 0$$

$$g_3(\vec{x}) = 80.51249 + 0.0071317x_2x_5 + 0.0029955x_1x_2 + 0.0021813x_3^2 - 110 \leq 0$$

$$g_4(\vec{x}) = -80.51249 - 0.0071317x_2x_5 - 0.0029955x_1x_2 - 0.0021813x_3^2 + 90 \leq 0$$

$$g_5(\vec{x}) = 9.300961 + 0.0047026x_3x_5 + 0.0012547x_1x_3 + 0.0019085x_3x_4 - 25 \leq 0$$

$$g_6(\vec{x}) = -9.300961 - 0.0047026x_3x_5 - 0.0012547x_1x_3 - 0.0019085x_3x_4 + 20 \leq 0$$

where: $78 \leq x_1 \leq 102$, $33 \leq x_2 \leq 45$, $27 \leq x_i \leq 45$ ($i = 3, 4, 5$). The optimum solution is $x^* = (78, 33, 29.995256025682, 45, 36.775812905788)$ where $f(x^*) = -30665.539$. Constraints g_1 y g_6 are active.

5. **g05**

$$\text{Minimize: } f(\vec{x}) = 3x_1 + 0.000001x_1^3 + 2x_2 + (0.000002/3)x_2^3$$

subject to:

$$g_1(\vec{x}) = -x_4 + x_3 - 0.55 \leq 0$$

$$g_2(\vec{x}) = -x_3 + x_4 - 0.55 \leq 0$$

$$h_3(\vec{x}) = 1000 \sin(-x_3 - 0.25) +$$

$$1000 \sin(-x_4 - 0.25) + 894.8 - x_1 = 0$$

$$h_4(\vec{x}) = 1000 \sin(x_3 - 0.25) +$$

$$1000 \sin(x_3 - x_4 - 0.25) + 894.8 - x_2 = 0$$

$$h_5(\vec{x}) = 1000 \sin(x_4 - 0.25) +$$

$$1000 \sin(x_4 - x_3 - 0.25) + 1294.8 = 0$$

where $0 \leq x_1 \leq 1200$, $0 \leq x_2 \leq 1200$, $-0.55 \leq x_3 \leq 0.55$, and $-0.55 \leq x_4 \leq 0.55$. The best known solution is $x^* = (679.9453, 1026.067, 0.1188764, -0.3962336)$ where $f(x^*) = 5126.4981$.

6. **g06**

$$\text{Minimize: } f(\vec{x}) = (x_1 - 10)^3 + (x_2 - 20)^3$$

subject to:

$$g_1(\vec{x}) = -(x_1 - 5)^2 - (x_2 - 5)^2 + 100 \leq 0$$

$$g_2(\vec{x}) = (x_1 - 6)^2 + (x_2 - 5)^2 - 82.81 \leq 0$$

where $13 \leq x_1 \leq 100$ and $0 \leq x_2 \leq 100$. The optimum solution is $x^* = (14.095, 0.84296)$ where $f(x^*) = -6961.81388$. Both constraints are active.

7. **g07**

$$\text{Minimize: } f(\vec{x}) = x_1^2 + x_2^2 + x_1x_2 - 14x_1 - 16x_2 + (x_3 - 10)^2 + 4(x_4 - 5)^2 + (x_5 - 3)^2 + 2(x_6 - 1)^2 + 5x_7^2 + 7(x_8 - 11)^2 + 2(x_9 - 10)^2 + (x_{10} - 7)^2 + 45$$

subject to:

$$g_1(\vec{x}) = -105 + 4x_1 + 5x_2 - 3x_7 + 9x_8 \leq 0$$

$$g_2(\vec{x}) = 10x_1 - 8x_2 - 17x_7 + 2x_8 \leq 0$$

$$g_3(\vec{x}) = -8x_1 + 2x_2 + 5x_9 - 2x_{10} - 12 \leq 0$$

$$g_4(\vec{x}) = 3(x_1 - 2)^2 + 4(x_2 - 3)^2 + 2x_3^2 - 7x_4 - 120 \leq 0$$

$$g_5(\vec{x}) = 5x_1^2 + 8x_2 + (x_3 - 6)^2 - 2x_4 - 40 \leq 0$$

$$g_6(\vec{x}) = x_1^2 + 2(x_2 - 2)^2 - 2x_1x_2 + 14x_5 - 6x_6 \leq 0$$

$$g_7(\vec{x}) = 0.5(x_1 - 8)^2 + 2(x_2 - 4)^2 + 3x_5^2 - x_6 - 30 \leq 0$$

$$g_8(\vec{x}) = -3x_1 + 6x_2 + 12(x_9 - 8)^2 - 7x_{10} \leq 0$$

where $-10 \leq x_i \leq 10$ ($i = 1, \dots, 10$). The global optimum is $x^* = (2.171996, 2.363683, 8.773926, 5.095984, 0.9906548, 1.430574, 1.321644, 9.828726,$

8.280092, 8.375927) where $f(x^*) = 24.3062091$. Constraints g_1, g_2, g_3, g_4, g_5 and g_6 are active.

8. **g08**

$$\text{Maximize: } f(\vec{x}) = \frac{\sin^3(2\pi x_1) \sin(2\pi x_2)}{x_1^3(x_1+x_2)}$$

subject to:

$$g_1(\vec{x}) = x_1^2 - x_2 + 1 \leq 0$$

$$g_2(\vec{x}) = 1 - x_1 + (x_2 - 4)^2 \leq 0$$

where $0 \leq x_1 \leq 10$ and $0 \leq x_2 \leq 10$. The optimum solution is located at $x^* = (1.2279713, 4.2453733)$ where $f(x^*) = 0.095825$.

9. **g09**

$$\text{Minimize: } f(\vec{x}) = (x_1 - 10)^2 + 5(x_2 - 12)^2 + x_3^4 + 3(x_4 - 11)^2 + 10x_5^6 + 7x_6^2 + x_7^4 - 4x_6x_7 - 10x_6 - 8x_7$$

subject to:

$$g_1(\vec{x}) = -127 + 2x_1^2 + 3x_2^4 + x_3 + 4x_4^2 + 5x_5 \leq 0$$

$$g_2(\vec{x}) = -282 + 7x_1 + 3x_2 + 10x_3^2 + x_4 - x_5 \leq 0$$

$$g_3(\vec{x}) = -196 + 23x_1 + x_2^2 + 6x_6^2 - 8x_7 \leq 0$$

$$g_4(\vec{x}) = 4x_1^2 + x_2^2 - 3x_1x_2 + 2x_3^2 + 5x_6 - 11x_7 \leq 0$$

where $-10 \leq x_i \leq 10$ ($i = 1, \dots, 7$). The global optimum is $x^* = (2.330499, 1.951372, -0.4775414, 4.365726, -0.6244870, 1.038131, 1.594227)$ where $f(x^*) = 680.6300573$. Two constraints are active (g_1 and g_4).

10. **g10**

$$\text{Minimize: } f(\vec{x}) = x_1 + x_2 + x_3$$

$$\text{subject to: } g_1(\vec{x}) = -1 + 0.0025(x_4 + x_6) \leq 0$$

$$g_2(\vec{x}) = -1 + 0.0025(x_5 + x_7 - x_4) \leq 0$$

$$g_3(\vec{x}) = -1 + 0.01(x_8 - x_5) \leq 0$$

$$g_4(\vec{x}) = -x_1x_6 + 833.33252x_4 + 100x_1 - 83333.333 \leq 0$$

$$g_5(\vec{x}) = -x_2x_7 + 1250x_5 + x_2x_4 - 1250x_4 \leq 0$$

$$g_6(\vec{x}) = -x_3x_8 + 1250000 + x_3x_5 - 2500x_5 \leq 0$$

where $100 \leq x_1 \leq 10000$, $1000 \leq x_i \leq 10000$, ($i = 2, 3$), $10 \leq x_i \leq 1000$, ($i = 4, \dots, 8$). The global optimum is: $x^* = (579.19, 1360.13, 5109.92, 182.0174, 295.5985, 217.9799, 286.40, 395.5979)$, where $f(x^*) = 7049.25$. g_1 , g_2 and g_3 are active.

11. **g11**

$$\text{Minimize: } f(\vec{x}) = x_1^2 + (x_2 - 1)^2$$

subject to:

$$h(\vec{x}) = x_2 - x_1^2 = 0$$

where: $-1 \leq x_1 \leq 1$, $-1 \leq x_2 \leq 1$. The optimum solution is $x^* = (\pm 1/\sqrt{2}, 1/2)$ where $f(x^*) = 0.75$.

12. **g12**

$$\text{Maximize: } f(\vec{x}) = \frac{100 - (x_1 - 5)^2 - (x_2 - 5)^2 - (x_3 - 5)^2}{100}$$

subject to:

$$g_1(\vec{x}) = (x_1 - p)^2 + (x_2 - q)^2 + (x_3 - r)^2 - 0.0625 \leq 0$$

where $0 \leq x_i \leq 10$ ($i = 1, 2, 3$) and $p, q, r = 1, 2, \dots, 9$. The feasible region of the search space consists of 9^3 disjointed spheres. A point (x_1, x_2, x_3) is feasible if and only if there exist p, q, r such the above inequality (12) holds. The global optimum is located at $x^* = (5, 5, 5)$ where $f(x^*) = 1$.

13. **g13**

$$\text{Minimize: } f(\vec{x}) = e^{x_1x_2x_3x_4x_5}$$

subject to:

$$h_1(\vec{x}) = x_1^2 + x_2^2 + x_3^2 + x_4^2 + x_5^2 - 10 = 0$$

$$h_2(\vec{x}) = x_2x_3 - 5x_4x_5 = 0$$

$$h_3(\vec{x}) = x_1^3 + x_2^3 + 1 = 0$$

where $-2.3 \leq x_i \leq 2.3$ ($i = 1, 2$) and $-3.2 \leq x_i \leq 3.2$ ($i = 3, 4, 5$). The optimum solution is $x^* = (-1.717143, 1.595709, 1.827247, -0.7636413, -0.763645)$ where $f(x^*) = 0.0539498$.

References

- [1] Dirk V. Arnold. *Noisy Optimization with Evolution Strategies*. Kluwer Academic Publishers, New York, June 2002. ISBN 1-4020-7105-1.
- [2] Torsten Asselmeyer, Werner Ebeling, and Helge Rosé. Evolutionary strategies of optimization. *Phys. Rev. E*, 56(1):1171–1180, July 1997.
- [3] Thomas Bäck. *Evolutionary Algorithms in Theory and Practice*. Oxford University Press, New York, 1996.
- [4] Thomas Bäck and Martin Schütz. Evolution strategies for mixed-integer optimization of optical multilayer systems. In J. R. McDonnell, R. G. Reynolds, and D. B. Fogel, editors, *Evolutionary Programming IV: Proc. of the Fourth Annual Conf. on Evolutionary Computation*, pages 33–51, Cambridge, MA, 1995. MIT Press.
- [5] H.-G. Beyer and D.V. Arnold. Theory of evolution strategies—a tutorial. In L. Kallel, N. Baudts, and A. Rogers, editors, *Theoretical Aspects of Evolutionary Computing*, pages 109–133. Springer, Berlin, 2001.
- [6] Carlos A. Coello Coello. Theoretical and Numerical Constraint Handling Techniques used with Evolutionary Algorithms: A Survey of the State of the Art. *Computer Methods in Applied Mechanics and Engineering*, 191(11-12):1245–1287, January 2002.
- [7] Carlos A. Coello Coello and Efrén Mezura-Montes. Handling Constraints in Genetic Algorithms Using Dominance-Based Tournaments. In I.C. Parmee, editor, *Proceedings of the Fifth International Conference on Adaptive Computing Design and Manufacture (ACDM 2002)*, volume 5, pages 273–284, University of Exeter, Devon, UK, April 2002. Springer-Verlag.
- [8] Carlos A. Coello Coello, David A. Van Veldhuizen, and Gary B. Lamont. *Evolutionary Algorithms for Solving Multi-Objective Problems*. Kluwer Academic Publishers, New York, June 2002. ISBN 0-3064-6762-3.

- [9] Kalyanmoy Deb. An Efficient Constraint Handling Method for Genetic Algorithms. *Computer Methods in Applied Mechanics and Engineering*, 186(2/4):311–338, 2000.
- [10] A.E. Eiben and J.E. Smith. *Introduction to Evolutionary Computing*. Springer-Verlag, November 2003.
- [11] David Goldberg. *The Design of Innovation*. Kluwer Academic Publishers, New York, June 2002. ISBN 1-4020-7098-5.
- [12] Garrison W. Greenwood and Yi-Ping Liu. Finding low energy conformations of atomic clusters using evolution strategies. In V. W. Porto, N. Saravanan, D. Waagen, and A. E. Eiben, editors, *Evolutionary Programming VII*, pages 493–502, Berlin, 1998. Springer. Lecture Notes in Computer Science 1447.
- [13] Sana Ben Hamida and Marc Schoenauer. ASCHEA: New Results Using Adaptive Segregational Constraint Handling. In *Proceedings of the Congress on Evolutionary Computation 2002 (CEC'2002)*, volume 1, pages 884–889, Piscataway, New Jersey, May 2002. IEEE Service Center.
- [14] Jeffrey Horn, Nicholas Nafpliotis, and David E. Goldberg. A Niche Pareto Genetic Algorithm for Multiobjective Optimization. In *Proceedings of the First IEEE Conference on Evolutionary Computation, IEEE World Congress on Computational Intelligence*, volume 1, pages 82–87, Piscataway, New Jersey, June 1994. IEEE Service Center.
- [15] Fernando Jiménez and José L. Verdegay. Evolutionary techniques for constrained optimization problems. In Hans-Jürgen Zimmermann, editor, *7th European Congress on Intelligent Techniques and Soft Computing (EUFIT'99)*, Aachen, Germany, 1999. Verlag Mainz. ISBN 3-89653-808-X.
- [16] James Kennedy and Russell C. Eberhart. *Swarm Intelligence*. Morgan Kaufmann, UK, 2001.

- [17] Slawomir Koziel and Zbigniew Michalewicz. Evolutionary Algorithms, Homomorphous Mappings, and Constrained Parameter Optimization. *Evolutionary Computation*, 7(1):19–44, 1999.
- [18] Efrén Mezura-Montes and Carlos A. Coello Coello. Multiobjective-Based Concepts to Handle Constraints in Evolutionary Algorithms. In Edgar Chávez, Jesús Favela, Marcelo Mejía, and Alberto Oliart, editors, *Proceedings of the Fourth Mexican International Conference on Computer Science (ENC'2003)*, pages 192–199, Los Alamitos, CA, September 2003. Apizaco, Tlaxcala, México, IEEE Computer Society.
- [19] Efrén Mezura-Montes and Carlos A. Coello Coello. A Simple Evolution Strategy to Solve Constrained Optimization Problems. In Erick Cantú-Paz, James A. Foster, Kalyanmoy Deb, Lawrence David Davis, Rajkumar Roy, Una-May O' Reilly, Hans-Georg Beyer, Russell Standish, Graham Kendall, Stewart Wilson, Mark Harman, Joachim Wegener, Dipankar Dasgupta, Mitch A. Potter, Alan C. Schultz, Kathryn A. Dowsland, Natasha Jonoska, and Julian Miller, editors, *Proceedings of the Genetic and Evolutionary Computation Conference (GECCO'2003)*, pages 640–641, Heidelberg, Germany, July 2003. Chicago, Illinois, Springer Verlag. Lecture Notes in Computer Science Vol. 2723.
- [20] Efrén Mezura-Montes and Carloa A. Coello Coello. Adding a Diversity Mechanism to a Simple Evolution Strategy to Solve Constrained Optimization Problems. In *Proceedings of the Congress on Evolutionary Computation 2003 (CEC'2003)*, volume 1, pages 6–13, Piscataway, New Jersey, December 2003. Canberra, Australia, IEEE Service Center.
- [21] Efrén Mezura-Montes and Carlos A. Coello Coello. A Numerical Comparison of some Multiobjective-Based Techniques to Handle Constraints in Genetic Algorithms. Technical Report EVOCINV-03-2002, Evolutionary Computation Group at CINVESTAV, Sección de Computación, Departamento de Ingeniería Eléctrica, CINVESTAV-IPN, México D.F., México, 2002. Available in the List of Refer-

ences on Constraint-Handling Techniques used with Evolutionary Algorithms at <http://www.cs.cinvestav.mx/~constraint>.

- [22] Efrén Mezura-Montes and Carlos A. Coello Coello. On the Usefulness of the Evolution Strategies Self-Adaptation Mechanism to Handle Constraints in Global Optimization. Technical Report EVOCINV-01-2003, Evolutionary Computation Group at CINVESTAV, Sección de Computación, Departamento de Ingeniería Eléctrica, CINVESTAV-IPN, México D.F., México, 2003. Available in the Constraint Handling Techniques in Evolutionary Algorithms Repository at <http://www.cs.cinvestav.mx/~constraint/>.
- [23] Z. Michalewicz and M. Michalewicz. Pro-Life versus Pro-Choice Strategies in Evolutionary Computation techniques. In M. Palaniswami, Y. Attikiouzel, R.J. Marks, D. Fogel, and T. Fukuda, editors, *Computational Intelligence: A Dynamic System Perspective*, pages 137–151. IEEE Press, 1995.
- [24] Zbigniew Michalewicz. *Genetic Algorithms + Data Structures = Evolution Programs*. Springer-Verlag, third edition, 1996.
- [25] Zbigniew Michalewicz and Marc Schoenauer. Evolutionary Algorithms for Constrained Parameter Optimization Problems. *Evolutionary Computation*, 4(1):1–32, 1996.
- [26] David Powell and Michael M. Skolnick. Using genetic algorithms in engineering design optimization with non-linear constraints. In Stephanie Forrest, editor, *Proceedings of the Fifth International Conference on Genetic Algorithms (ICGA-93)*, pages 424–431, San Mateo, California, July 1993. University of Illinois at Urbana-Champaign, Morgan Kaufmann Publishers.
- [27] Kenneth V. Price. An Introduction to Differential Evolution. In David Corne, Marco Dorigo, and Fred Glover, editors, *New Ideas in Optimization*, pages 79–108. Mc Graw-Hill, UK, 1999.
- [28] Jon T. Richardson, Mark R. Palmer, Gunar Liepins, and Mike Hilliard. Some Guidelines for Genetic Algorithms with Penalty Functions. In J. David Schaffer,

editor, *Proceedings of the Third International Conference on Genetic Algorithms (ICGA-89)*, pages 191–197, San Mateo, California, June 1989. George Mason University, Morgan Kaufmann Publishers.

- [29] Thomas P. Runarsson and Xin Yao. Stochastic Ranking for Constrained Evolutionary Optimization. *IEEE Transactions on Evolutionary Computation*, 4(3):284–294, September 2000.
- [30] Hans Paul Schwefel. *Evolution and Optimal Seeking*. John Wiley & Sons Inc., New York, 1995.
- [31] Frank Schweitzer, Werner Ebeling, Helge Rosé, and Olaf Weiss. Optimization of road networks using evolutionary strategies. *Evolutionary Computation*, 5(4):419–438, 1998.
- [32] Alice E. Smith and David W. Coit. Constraint Handling Techniques—Penalty Functions. In Thomas Bäck, David B. Fogel, and Zbigniew Michalewicz, editors, *Handbook of Evolutionary Computation*, chapter C 5.2. Oxford University Press and Institute of Physics Publishing, 1997.

Figure Captions

Figure 1: Algorithm of the variation of a $(\mu + 1)$ -ES used in the first version of the approach.

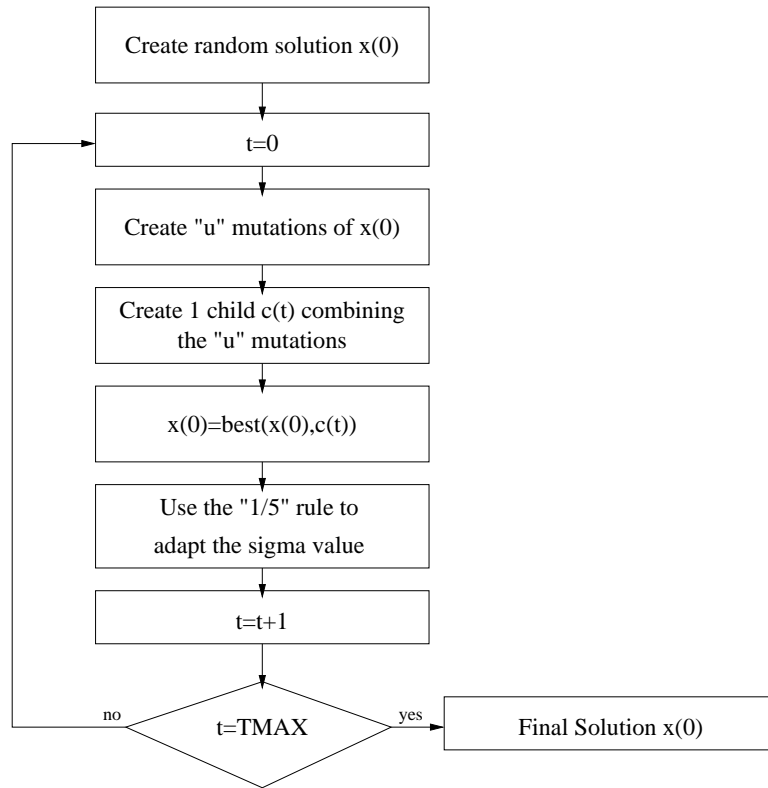
Figure 2: Pseudocode of the generation of the population for the next generation with the diversity mechanism incorporated. $flip(P)$ is a function that returns TRUE with probability P .

Figure 3: Pseudocode of the panmictic combined (discrete-intermediate) recombination operator used by our approach. $flip(P)$ is a function that returns TRUE with probability P .

Figure 4: Algorithm of our $(\mu + \lambda)$ -ES. The thick boxes indicate the three modifications made to the original ES.

Figure 5: Percentage of Feasible Solutions (a) every 200 generations (from 0 to 800), (b) every 20 generations (from 0 to 200), (c) a detailed oscillation of feasible and infeasible solutions (from 0 to 800) and (d) a detailed oscillation of feasible and infeasible solutions (from 0 to 200)

Figures on Individual Pages



function population_for_next_generation()

For i=1 to μ **Do**

If flip(0.97)

Select the best individual based on the comparison mechanism from the union of the parents and offspring population, add it to the population for the next generation and delete it from this union.

Else

If flip(0.5)

Select the best infeasible individual from the parents population and add it to the population for the next generation.

Else

Select the best infeasible individual from the offspring population and add it to the population for the next generation.

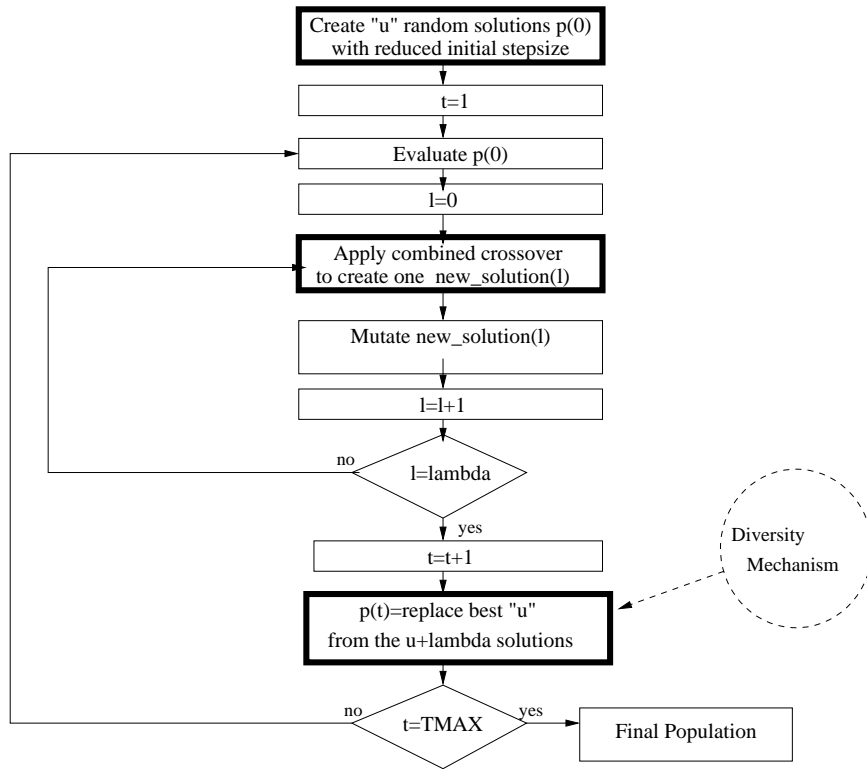
End If

End If

End For

End

```
function combined_recombination()  
  Select randomly mate_1 from the parents population  
  For i=1 to NUMBER_OF_VARIABLES Do  
    Select randomly mate_2 from the parents population  
    If flip(0.5)  
      If flip(0.5)  
         $child_i = mate_{1_i}$   
      Else  
         $child_i = mate_{2_i}$   
      End If  
    Else  
       $child_i = mate_{1_i} + ((mate_{2_i} - mate_{1_i})/2, 0)$   
    End If  
  End For  
End
```



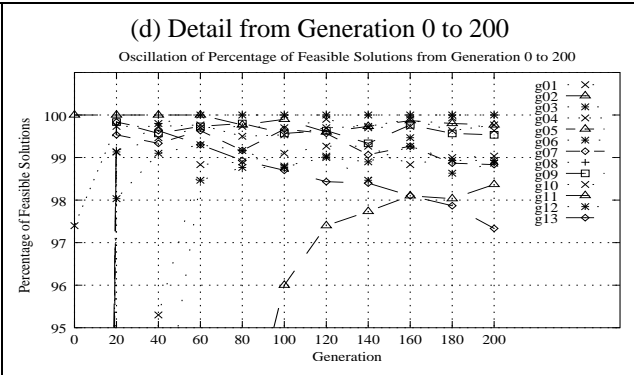
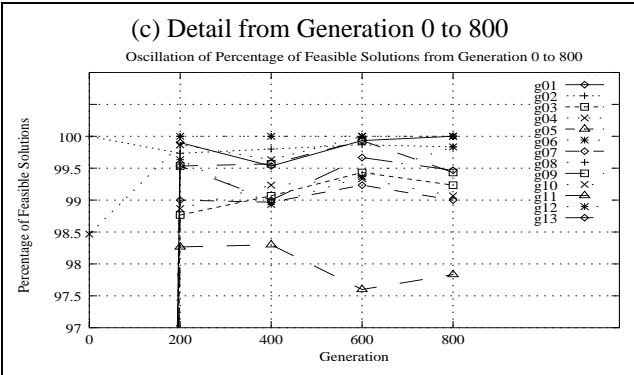
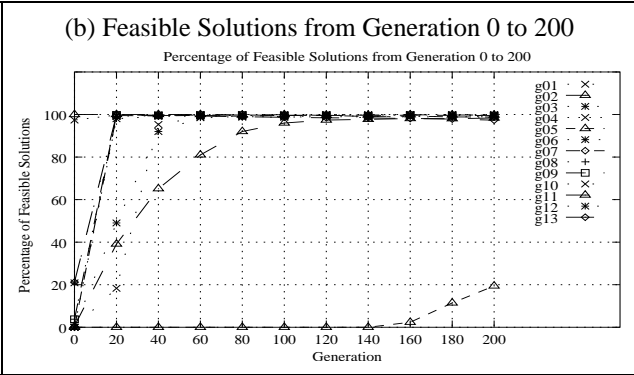
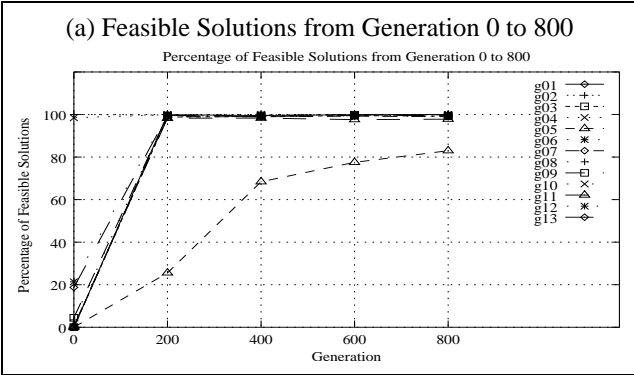


Table Captions

Table 1: Values of ρ for the 13 test problems chosen.

Table 2: Statistical results obtained by our SMES for the 13 test functions over 30 independent runs. A result in **boldface** indicates that the global optimum (or best known solution) was reached.

Table 3: Comparison of the best solutions found by our SMES against the Homomorphous Maps (HM), Stochastic Ranking (SR), ASCHEA, our GA version and two other versions of our SMES: one that uses only recombination and another one that uses both recombination and stepsize reduction. A result in **boldface** indicates that the global optimum (or best known solution) was reached. “-” means that no feasible solutions were found. NA = Not available.

Table 4: Comparison of the mean solutions found by our SMES against the Homomorphous Maps (HM), Stochastic Ranking (SR), ASCHEA, our GA version and two other versions of our SMES: one that uses only recombination and another one that uses both recombination and stepsize reduction. A result in **boldface** indicates that the global optimum (or best known solution) was reached. “-” means that no feasible solutions were found. NA = Not available.

Table 5: Comparison of the worst solutions found by our SMES against the Homomorphous Maps (HM), Stochastic Ranking (SR), ASCHEA, our GA version and two other versions of our SMES: one that uses only recombination and another one that uses both recombination and stepsize reduction. A result in **boldface** indicates that the global optimum (or best known solution) was reached. “-” means that no feasible solutions were found. NA = Not available.

Table 6: Number of runs (out of 30) where the global optimum (or best known solution) was found. We also show the best and average generation number at which the global optimum (or best known solution) was found.

Table 7: Best solutions found by our SMES with its three mechanisms analyzed separately. “*” means infeasible. A result in **boldface** indicates that the global optimum (or best known solution) was found.

Table 8: Mean solutions found by our SMES with its three mechanisms analyzed separately. “*” means infeasible. A result in **boldface** indicates that the global optimum (or best known solution) was found.

Table 9: Worst solutions found by our SMES with its three mechanisms analyzed separately. “*” means infeasible. A result in **boldface** indicates that the global optimum (or best known solution) was found.

Table 10: Best solutions found by our SMES with all possible combinations of two of its (three) mechanisms. “*” means infeasible. A result in **boldface** indicates that the global optimum (or best known solution) was found.

Table 11: Mean solutions found by our SMES with all possible combinations of two of its (three) mechanisms. A result in **boldface** indicates that the global optimum (or best known solution) was found.

Table 12: Worst solutions found by our SMES with all possible combinations of two of its (three) mechanisms. A result in **boldface** indicates that the global optimum (or best known solution) was found.

Table 13: Statistical results of our approach after 20 generations. (“*” means infeasible). A result in **boldface** indicates that the global optimum (or best known solution) was reached.

Table 14: Statistical Results of our approach after 200 generations. (“*” means infeasible). A result in **boldface** indicates that the global optimum (or best known solution) was reached.

Tables on Individual Pages

Problem	n	Type of function	ρ	LI	NI	LE	NE
g01	13	quadratic	0.0003%	9	0	0	0
g02	20	nonlinear	99.9973%	1	1	0	0
g03	10	nonlinear	0.0026%	0	0	0	1
g04	5	quadratic	27.0079%	0	6	0	0
g05	4	nonlinear	0.0000%	2	0	0	3
g06	2	nonlinear	0.0057%	0	2	0	0
g07	10	quadratic	0.0000%	3	5	0	0
g08	2	nonlinear	0.8581%	0	2	0	0
g09	7	nonlinear	0.5199%	0	4	0	0
g10	8	linear	0.0020%	3	3	0	0
g11	2	quadratic	0.0973%	0	0	0	1
g12	3	quadratic	4.7697%	0	9 ³	0	0
g13	5	nonlinear	0.0000%	0	0	1	2

Problem	Statistical Results of the Simple Multimembered Evolution Strategy (SMES)					
	Optimal	Best	Mean	Median	Worst	St. Dev.
g01	-15.000	-15.000	-15.000	-15.000	-15.000	0
g02	0.803619	0.803601	0.785238	0.792549	0.751322	1.67E-2
g03	1.000	1.000	1.000	1.000	1.000	2.09E-4
g04	-30665.539	-30665.539	-30665.539	-30665.539	-30665.539	0
g05	5126.498	5126.599	5174.492	5160.198	5304.167	50.06E+0
g06	-6961.814	-6961.814	-6961.284	-6961.814	-6952.482	1.85E+0
g07	24.306	24.327	24.475	24.426	24.843	1.32E-1
g08	0.095825	0.095825	0.095825	0.095825	0.095825	0
g09	680.63	680.632	680.643	680.642	680.719	1.55E-2
g10	7049.25	7051.903	7253.047	7253.603	7638.366	136.02E+0
g11	0.75	0.75	0.75	0.75	0.75	1.52E-4
g12	1.000	1.000	1.000	1.000	1.000	0
g13	0.053950	0.053986	0.166385	0.061873	0.468294	1.77E-1

P	Comparison of the best solution obtained.							
	Optimal	HM	SR	ASCHEA	SMES	GA	Recomb.	Recomb.& Step.Reduc.
g01	-15.000	-14.7886	-15.000	-15.0	-15.000	-14.440	-15.000	-15.000
g02	0.803619	0.79953	0.803515	0.785	0.803601	0.796231	0.803589	0.803592
g03	1.000	0.9997	1.000	1.0	1.000	0.990	0.800	1.000
g04	-30665.539	-30664.5	-30665.539	-30665.5	-30665.539	-30626.053	-30665.445	-30665.422
g05	5126.498	-	5126.497	5126.5	5126.599	-	5133.935	5126.988
g06	-6961.814	-6952.1	-6961.814	-6961.81	-6961.814	-6952.472	-6961.814	-6961.814
g07	24.306	24.620	24.307	24.3323	24.327	31.097	24.360	24.343
g08	0.095825	0.0958250	0.095825	0.095825	0.095825	0.095825	0.095825	0.095825
g09	680.63	680.91	680.630	680.630	680.632	685.994	680.632	680.631
g10	7049.25	7147.9	7054.316	7061.13	7051.903	9079.770	7231.497	7062.754
g11	0.75	0.75	0.750	0.75	0.75	0.75	0.75	0.75
g12	1.000	0.999999857	1.000000	NA	1.000	1.000	1.000	1.000
g13	0.053950	NA	0.053957	NA	0.053986	0.134057	0.171855	0.058037

P	Comparison of the mean solution obtained.							
	Optimal	HM	SR	ASCHEA	SMES	GA	Recomb.	Recomb.& Step.Reduc.
g01	-15.000	-14.7082	-15.000	-14.84	-15.000	-14.236	-15.000	-15.000
g02	0.803619	0.79671	0.781975	0.59	0.785238	0.788588	0.802376	0.798786
g03	1.000	0.9989	1.000	0.99989	1.000	0.976	0.529	1.000
g04	-30665.539	-30655.3	-30665.539	-30665.5	-30665.539	-30590.455	-30665.445	-30661.106
g05	5126.498	-	5128.881	5141.65	5174.492	-	5133.935	5158.739
g06	-6961.814	-6342.6	-6875.940	-6961.81	-6961.284	-6872.204	-6961.814	-6961.814
g07	24.306	24.826	24.374	24.66	24.475	34.980	24.472	24.474
g08	0.095825	0.0891568	0.095825	0.095825	0.095825	0.095799	0.095825	0.095825
g09	680.63	681.16	680.656	680.641	680.643	692.064	680.637	680.637
g10	7049.25	8163.6	7559.192	7193.11	7253.047	10003.225	7355.564	7193.887
g11	0.75	0.75	0.750	0.75	0.75	0.75	0.752	0.752
g12	1.000	0.999134613	1.000000	NA	1.000	1.000	1.000	1.000
g13	0.053950	NA	0.057006	NA	0.166385	-	0.787648	0.247404

P	Comparison of the worst solution obtained.							
	Optimal	HM	SR	ASCHEA	SMES	GA	Recomb.	Recomb.& Step.Reduc.
g01	-15.000	-14.6154	-15.000	NA	-15.000	-14.015	-15.000	-15.000
g02	0.803619	0.79119	0.726288	NA	0.751322	0.779140	0.787626	0.785255
g03	1.000	0.9978	1.000	NA	1.000	0.956	0.294	0.999
g04	-30665.539	-30645.9	-30665.539	NA	-30665.539	-30567.105	-30649.424	-30647.484
g05	5126.498	-	5142.472	NA	5304.167	-	5246.968	5201.935
g06	-6961.814	-5473.9	-6350.262	NA	-6952.482	-6784.255	-5218.657	-6961.814
g07	24.306	25.069	24.642	NA	24.843	38.686	24.658	24.789
g08	0.095825	0.0291438	0.095825	NA	0.095825	0.095723	0.095825	0.095825
g09	680.63	683.18	680.763	NA	680.719	698.297	680.649	680.664
g10	7049.25	9659.3	8835.655	NA	7638.366	11003.533	7548.530	7368.333
g11	0.75	0.75	0.750	NA	0.75	0.752	0.785	0.767
g12	1.000	0.991950498	1.000000	NA	1.000	0.999	1.000	1.000
g13	0.053950	NA	0.216915	NA	0.468294	-	-	0.466266

Problem	Runs that find the optimum	Lowest generation	Average
g01	30	634	671
g03	30	41	184
g04	30	113	129
g06	15	47	249
g08	30	11	18
g11	30	28	88
g12	30	63	77

Problem	Best solutions obtained by our SMES with its three mechanisms analyzed separately			
	Optimal	Only Combined Recombination	Only Diversity Mech.	Only Stepsize Reduction
g01	-15.000	-15.000	-15.000	-15.000
g02	0.803619	0.803589	0.763226	0.744524
g03	1.000	0.800	0.995	0.482
g04	-30665.539	-30665.445	-30663.625	-30664.609
g05	5126.498	5133.935	5127.187	5126.938
g06	-6961.814	-6961.814	-6961.814	-6961.814
g07	24.306	24.360	24.576	24.429
g08	0.095825	0.095825	0.095825	0.095825
g09	680.63	680.632	680.654	680.654
g10	7049.25	7231.497	7078.823	7059.549
g11	0.75	0.75	0.75	0.75
g12	1.000	1.000	1.000	1.000
g13	0.053950	0.171855	0.025667*	0.013617*

Problem	Mean solutions obtained by our SMES with its three mechanisms analyzed separately			
	Optimal	Only Combined Recombination	Only Diversity Mech.	Only Stepsize Reduction
g01	-15.000	-15.000	-14.055	-14.493
g02	0.803619	0.802376	0.674	0.627237
g03	1.000	0.529	0.692	0.212
g04	-30665.539	-30665.445	-30630.231	-30633.003
g05	5126.498	5133.935	5373.424	5271.296
g06	-6961.814	-6961.814	-6950.373	-6961.439
g07	24.306	24.472	26.883	26.694
g08	0.095825	0.095825	0.095825	0.095825
g09	680.63	680.637	681.098	681.299
g10	7049.25	7355.564	7783.965	7527.588
g11	0.75	0.752	0.755	0.752
g12	1.000	1.000	1.000	1.000
g13	0.053950	0.787648	0.052238*	0.201332*

Problem	Worst solutions obtained by our SMES with its three mechanisms analyzed separately			
	Optimal	Only Combined Recombination	Only Diversity Mech.	Only Stepsize Reduction
g01	-15.000	-15.000	-10.875	-12.585
g02	0.803619	0.787626	0.586408	0.499773
g03	1.000	0.294	0.441	0.021
g04	-30665.539	-30649.424	-30447.381	-30582.023
g05	5126.498	5246.968	6018.426	6090.623
g06	-6961.814	-5218.657	-6618.615	-6952.750
g07	24.306	24.658	38.710	31.982
g08	0.095825	0.095825	0.095825	0.095825
g09	680.63	680.649	681.752	683.611
g10	7049.25	7548.530	9089.470	8585.027
g11	0.75	0.785	0.824	0.767
g12	1.000	1.000	0.999	1.000
g13	0.053950	1.0004*	0.06212	1.965371*

Problem	Best solutions obtained by our SMES with two of its mechanisms combined.			
	Optimal	Combined Recombination & Diversity Mechanism	Combined Recombination & Stepsize Reduction	Stepsize Reduction & Diversity Mechanism
g01	-15.000	-15.000	-15.000	-15.000
g02	0.803619	0.803549	0.803592	0.741027
g03	1.000	0.998	1.000	0.725
g04	-30665.539	-30665.539	-30665.422	-30665.318
g05	5126.498	5105.347*	5126.988	5126.534
g06	-6961.814	-6961.814	-6961.814	-6961.814
g07	24.306	24.353	24.343	24.478
g08	0.095825	0.095825	0.095825	0.095825
g09	680.63	680.633	680.631	680.671
g10	7049.25	7092.887	7062.754	7095.610
g11	0.75	0.75	0.75	0.75
g12	1.000	1.000	1.000	1.000
g13	0.053950	0.055491	0.058037	0.033529*

Problem	Mean solutions obtained by our SMES with two of its mechanisms combined.			
	Optimal	Combined Recombination & Diversity Mechanism	Combined Recombination & Stepsize Reduction	Stepsize Reduction & Diversity Mechanism
g01	-15.000	-15.000	-15.000	-14.125
g02	0.803619	0.775841	0.798786	0.609223
g03	1.000	0.808	1.000	0.315
g04	-30665.539	-30665.539	-30661.106	-30637.253
g05	5126.498	5249.087*	5158.739	5303.175
g06	-6961.814	-6900.247	-6961.814	-6961.814
g07	24.306	24.559	24.474	26.327
g08	0.095825	0.095825	0.095825	0.095825
g09	680.63	680.643	680.637	681.040
g10	7049.25	7605.077	7193.887	7823.012
g11	0.75	0.754	0.752	0.757
g12	1.000	1.000	1.000	1.000
g13	0.053950	0.372581	0.247404	0.108290*

Problem	Worst solutions obtained by our SMES with two of its mechanisms combined.			
	Optimal	Combined Recombination & Diversity Mechanism	Combined Recombination & Stepsize Reduction	Stepsize Reduction & Diversity Mechanism
g01	-15.000	-15.000	-15.000	-11.694
g02	0.803619	0.647445	0.785255	0.446562
g03	1.000	0.243	0.999	0.088
g04	-30665.539	-30665.539	-30647.484	-30523.984
g05	5126.498	*5877.772	5201.935	6005.305
g06	-6961.814	-6173.165	-6961.814	-6961.808
g07	24.306	25.136	24.789	30.682
g08	0.095825	0.095825	0.095825	0.095825
g09	680.63	680.664	680.664	681.724
g10	7049.25	13883.840	7368.333	9099.229
g11	0.75	0.854	0.767	0.909
g12	1.000	1.000	1.000	1.000
g13	0.053950	1.229679*	0.466266	0.469699*

Problem	SMES after 20 generations.					
	Optimal	Best	Mean	Median	Worst	St. Dev.
g01	-15.000	-7.291	-5.686	-5.685	-3.820	9.05E-1
g02	0.803619	0.442641	0.372686	0.370697	0.317450	2.65E-2
g03	1.000	0.949	0.785	0.827	0.526	1.13E-1
g04	-30665.539	-30563.615	-30473.319	-30462.027	-30401.756	40.26E+0
g05	5126.498	*5067.897	5211.511	5199.974	*5643.923	103.26E+0
g06	-6961.814	-6890.164	-6235.589	-6188.203	-5552.386	371.89E+0
g07	24.306	62.136	135.969	121.868	682.452	107.72E+0
g08	0.095825	0.095825	0.095825	0.095825	0.095817	2.0E-6
g09	680.63	686.592	704.351	704.377	719.151	8.91E+0
g10	7049.25	12777.324	17407.559	17284.081	25774.398	2368.59E+0
g11	0.75	0.750	0.783	0.764	*0.897	4.07E-2
g12	1.000	0.999	0.999	0.999	0.999	7.0E-5
g13	0.053950	*0.001348	*0.009035	*0.004388	*0.026345	8.45E-3

Problem	SMES after 200 generations.					
	Optimal	Best	Mean	Median	Worst	St. Dev.
g01	-15.000	-14.999	-14.960	-14.999	-13.828	2.10E-1
g02	0.803619	0.801158	0.777458	0.787125	0.678203	2.43E-2
g03	1.000	1.000	0.999	0.999	0.987	3.74E-3
g04	-30665.539	-30665.539	-30665.531	-30665.536	-30665.473	1.35E-2
g05	5126.498	5126.988	5179.163	5162.323	5379.227	63.5E+0
g06	-6961.814	-6961.808	-6959.910	-6961.624	-6938.690	4.39E+0
g07	24.306	24.473	24.734	24.711	25.401	2.15E-1
g08	0.095825	0.095825	0.095825	0.095825	0.095825	0
g09	680.63	680.643	680.680	680.680	680.736	2.43E-2
g10	7049.25	7076.725	7330.398	7319.405	7816.830	153.72E+0
g11	0.75	0.75	0.75	0.75	0.76	3.07E-3
g12	1.000	1.000	1.000	1.000	1.000	0
g13	0.053950	*0.041436	0.145069	*0.045766	0.387152	1.53E-1

Authors' Biographies



Efrén Mezura-Montes received the B.Sc. in computer systems engineering from the Universidad de las Américas Puebla, in Puebla, México and an M.Sc. in artificial intelligence from the Universidad Veracruzana, in Xalapa, Veracruz, México, in 1997 and 2002, respectively.

He is currently working towards the Ph.D. degree in the Department of Electrical Engineering at the Centro de Investigación y de Estudios Avanzados del Instituto Politécnico Nacional (CINVESTAV-IPN), in México City.

His current research interests include: evolutionary computation, global optimization, constraint handling techniques for evolutionary algorithms and multiobjective optimization.



Carlos A. Coello Coello received the B.Sc. degree in civil engineering from the Universidad Autónoma de Chiapas, México, and the M.Sc. and the PhD degrees in computer science from Tulane University, USA, in 1991, 1993, and 1996, respectively.

He is currently an associate professor (CINVESTAV-3B Researcher) at the electrical engineering department of CINVESTAV-IPN, in Mexico City, México. Dr. Coello has authored and co-authored over 100 technical papers and several book chapters. He has also co-authored the book *Evolutionary Algorithms for Solving Multi-Objective Problems* (Kluwer Academic Publishers, 2002). Additionally, Dr. Coello has served in the program committees of over 30 international conferences and has been technical reviewer for over 30 international journals including the *IEEE Transactions on Evolutionary Computation* in which he also serves as Associate Editor. He also chairs the *Task Force on Multi-Objective Evolutionary Algorithms* of the IEEE Neural Networks Society. He is a member of the IEEE, the ACM, Sigma Xi, and the Mexican Academy of Sciences.

His major research interests are: evolutionary multi-objective optimization, constraint-handling techniques for evolutionary algorithms, and evolvable hardware.